



Product Name: Eternity
ITEM NUMBER: 39776BCPC

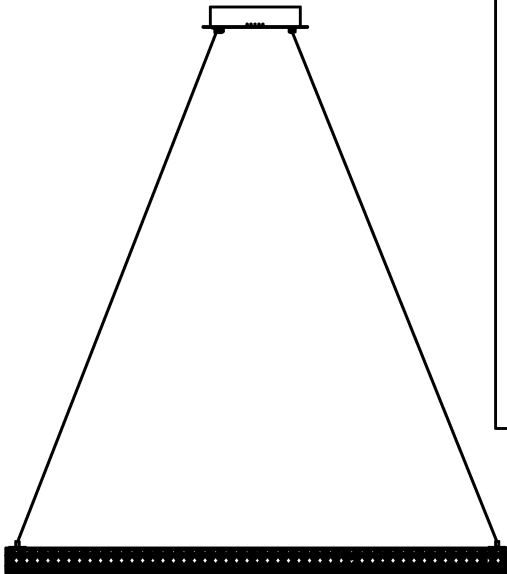
Please consult your electrician for hanging fixture and wiring

WARNING: Wires need to be connected to driver found in canopy and should not be connected directly to power source or a short may occur

The Fixture is designed to dim with a standard Triac forward phase dimmer. Dimming levels will vary by dimmer
The above belongs in box with recommended drivers
Below is a list of recommended dimmers

- Lutron MACL-153M
- Lutron DVL-153P
- Lutron SCL-153P
- Leviton IPL06-10Z
- Leviton 6674-POW

Due to inrush current wattage should not exceed 150 watts of product a 600 watt dimmer

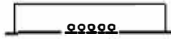


48W LED

IMPORTANT: Turn off power at the main fuse or circuit breaker box before starting installation



(A)
Mounting
Bracket

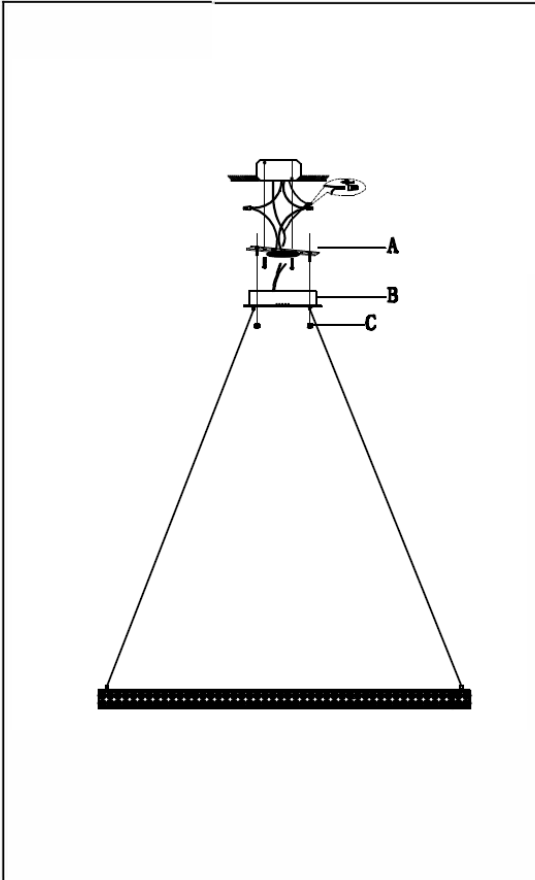


(B)
Canopy

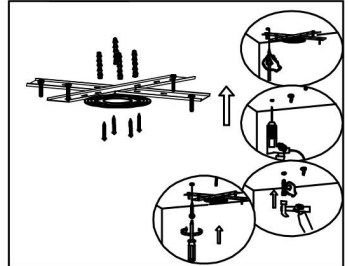


(C)
Finial

Locate all hardware & components before discarding packaging

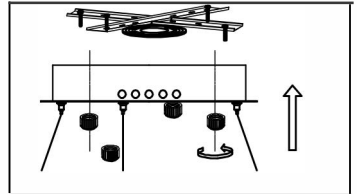


1.)



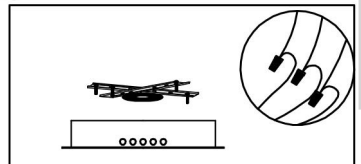
Step 1: Remove mounting bracket (A) and install to electrical box. Mark where anchors(B) meet ceiling, remove mounting bracket from ceiling, and then drill holes using 3/16" drill bit where marked (B). install and attach anchors to secure bracket at ends

2.)



Step 2: Adjust wire to the desired mounting height. (If cutting wire is necessary see instructions on page 3). Secure fixture to ceiling using finials(C) provided.

3.)



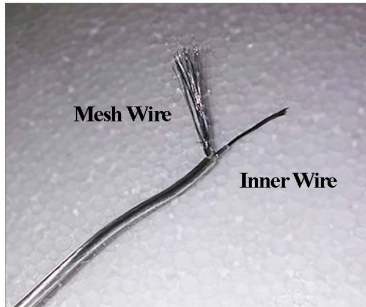
Step 3: Wire fixture to wire in outlet box. Black is live, White is neutral and Copper is ground.

Cleaning & Care:
Clean with a soft and a mild Detergent.
Do not use Abrasive cleaner

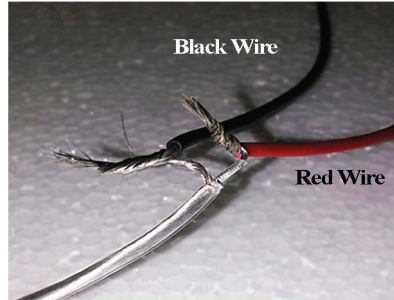
STEP 2a.

If wire was cut while adjusting the height, please note the wire consist of an outer mesh (-) and inner wire (+). Strip wire to expose inner wires(+), then separate mesh (-) from inner wire (+).

Pendant Wires



Driver Wires



Pendant	Driver
InnerWire (+)	DriverRed (+)
OuterMesh (-)	DriverBlack (-)

2b.

